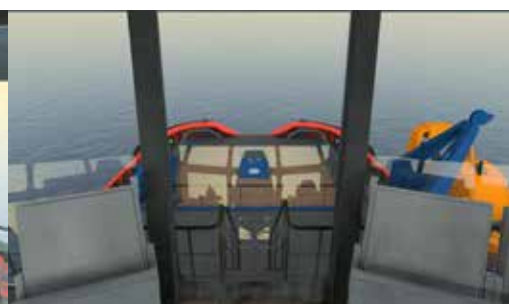




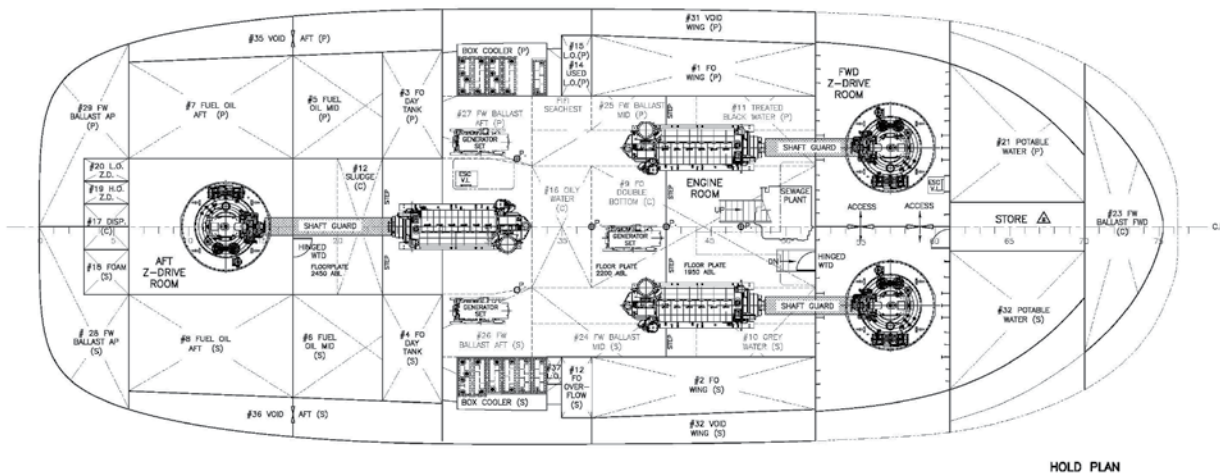
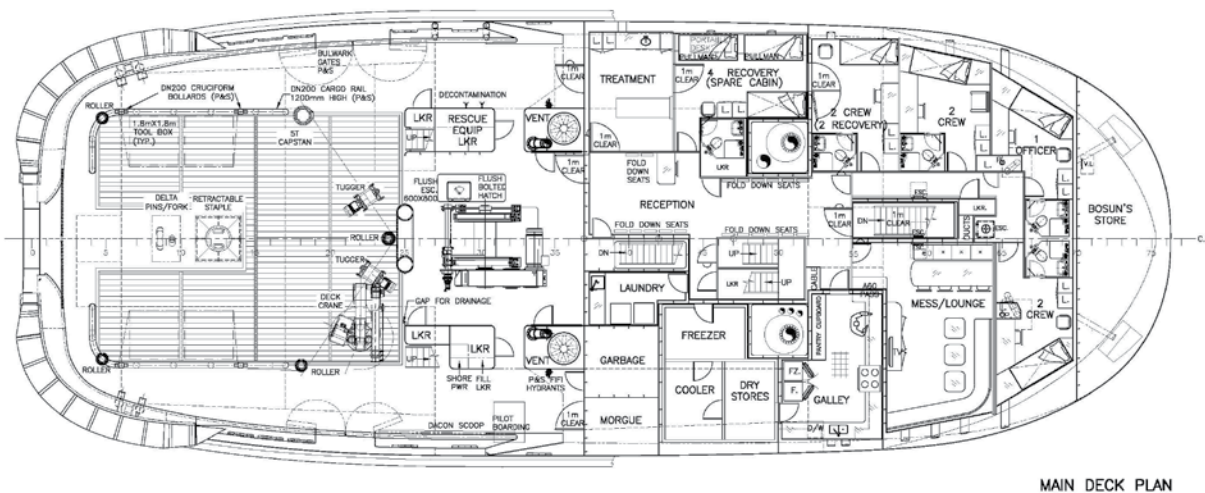
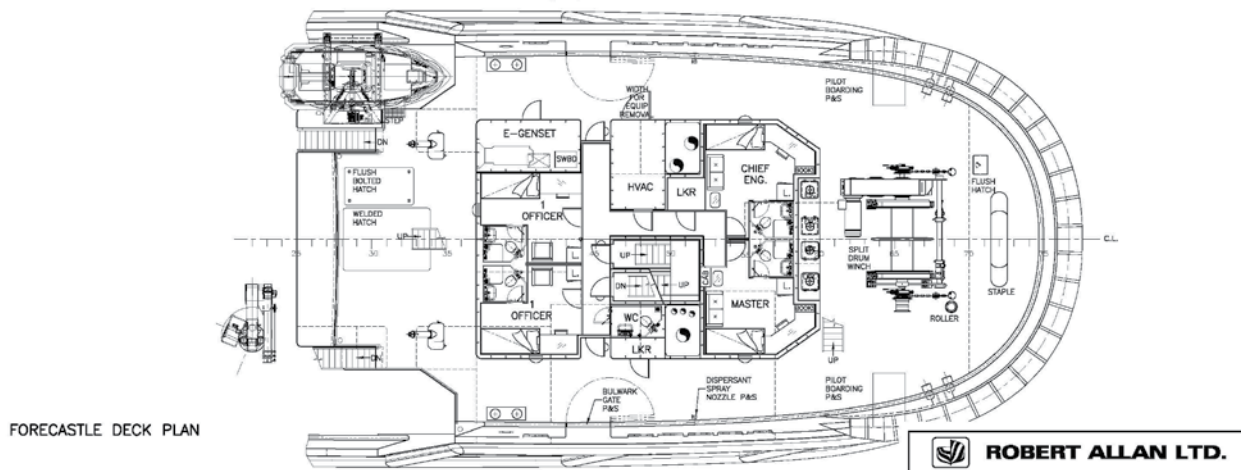
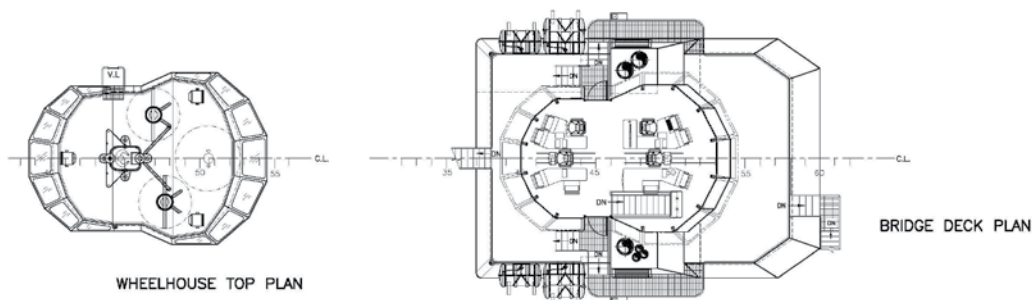
ART 100-42 | INFIELD SUPPORT VESSEL

VESSEL SPECIFICATION SHEET

Flag and Classification		Main and Auxilliary Engines	
Classification Society	Lloyd's Register	Propulsion Engines	3 x Niigata 6L28 AHX (3 x 2,206 kW)
Class Notation	+ 100 A1 Tug, Fire-Fighting Ship 1 with Waterspray, + LMC, UMS, IWS	Z-drive Units	3 x Niigata ZP 41FP
Flag	Australian Flag	Ship Service Generator/s	Caterpillar C9
Port of Registry	Broome, WA, Australia	Emergency Generator/s	Caterpillar C4
Build Year	Under construction (2016)	Deck Machinery	
Shipbuilder	ASL Shipyards Pte Ltd	Aft Towing Winch	2 x 350 metres Dyneema (split drum)
Dimensions		Fwd Towing Winch	450 metres Dyneema
Length overall (excl. fendering)	42.00 metres	Tank Capacities	
Length, waterline	40.35 metres	Fuel oil	450.00 m3
Beam (moulded)	16.00 metres	Fresh water	64.00 m3
Depth, least moulded	6.30 metres	Lubrication oil engines	7.00 m3
Draught (Full Load)	7.40 metres	Lubrication oil Z-drive	4.00 m3
Draught 50% consumables	7.00 metres	Hydraulic oil	4.00 m3
Gross Registered tonnes (GRT)	1050.00 tonnes (approximately)	Used oil	4.00 m3
Accommodations		Sewage	12.00 m3
Total Accommodations	10 persons	Grey water	15.00 m3
Rescue capability	85 persons	Fresh Water Ballast	144.00 m3
Minimum Performance Requirement		Sludge	7.40 m3
Bollard pull, ahead	100.00 tonnes (minimum)	Oily water tank	12.00 m3
Bollard pull, astern	100.00 tonnes (minimum)	Foam tank	8.00 m3
Free running speed	12.0 knots	Dispersant tank	8.00 m3



ART 100-42 | INFIELD SUPPORT VESSEL



VESSEL SPECIFICATION SHEET



KT MARITIME SERVICES AUSTRALIA PTY LTD

Tel: +61 8 9212 6000 | Email: info@kt-maritime.com | kt-maritime.com
Office Address: Level 4, 22 Mount Street, Perth, WA, Australia 6000



A joint venture company between KOTUG and Teekay